

Official Eaton Township Zoning Map

Eaton Township, Lorain County, Ohio

Zoning Map Adopted: April 21, 2009 - Resolution 09-139

[Signature]
Chair, Eaton Township Trustees

[Signature]
Township Trustee

[Signature]
Township Trustee

[Signature]
Township Fiscal Officer

Included Amendments:

6/15/1998	1/27/2006
6/29/2000	4/13/2007
10/17/2002	6/14/2007
11/11/2003	11/1/2007
12/25/2003	1/10/2008
5/6/2004	4/9/2014
8/6/2004	8/18/2015
8/15/2004	11/17/2015
9/26/2005	10/18/2016
10/18/2005	6/20/2017
1/19/2006	11/25/2024
	12/16/2025

This zoning map is a graphic representation of the zoning resolutions of Eaton Township. It is not intended to replace the zoning resolutions for legal purposes of determining zoning designation.

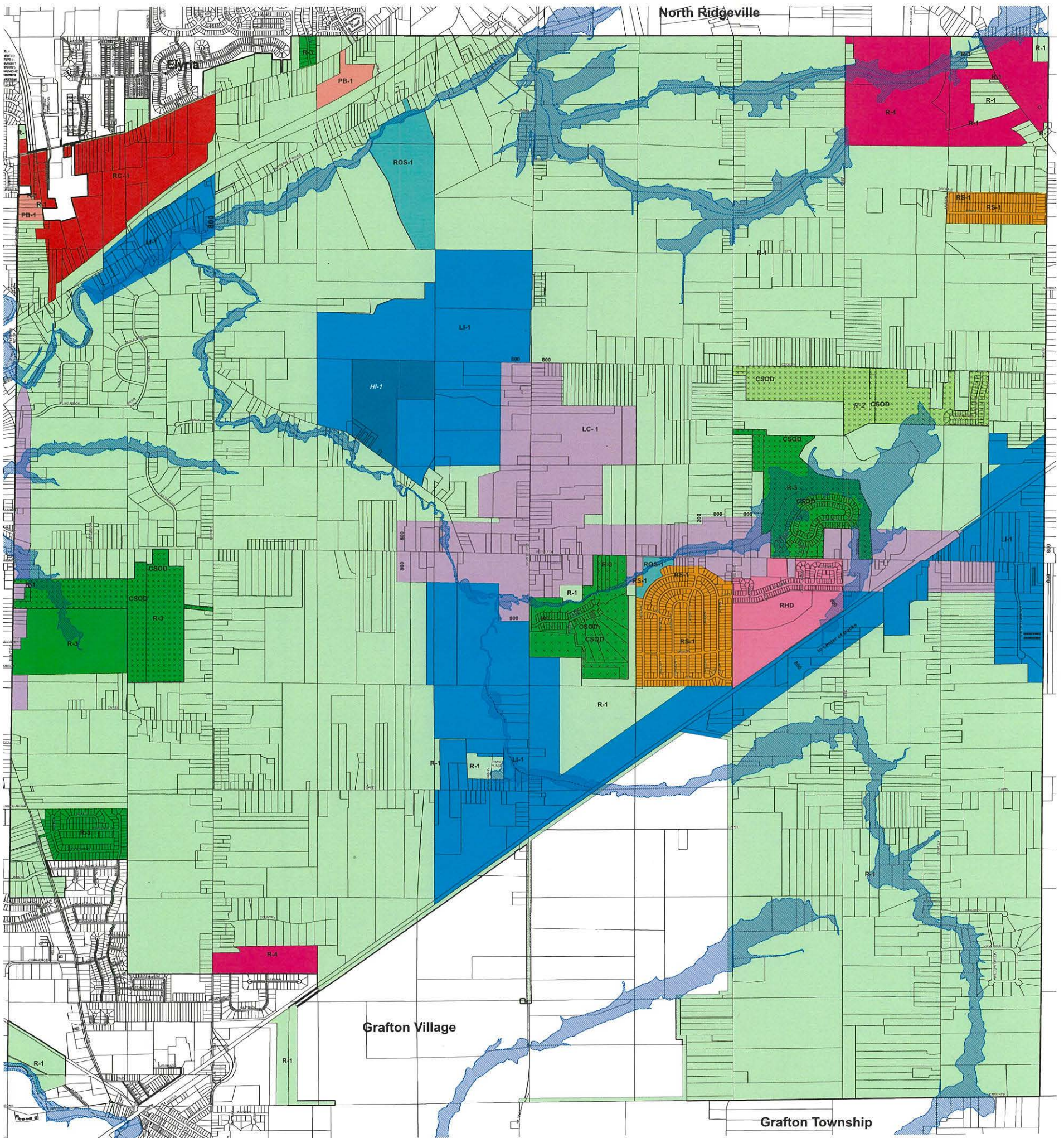
Zoning Designations

FEMA Floodzone - Adopted 8/2008

Zoning Polygons

JURISDICTI, ZONING_COD

- ROS-1 - Recreational Open Space District
- R-1 - Residential District
- R-2 - Residential District
- R-3 - Residential District
- R-4 - Residential District
- RS-1 - Special Residential District
- RHD - Residential High Density District
- LC-1 - Local Commercial District
- PB-1 - Professional Business District
- RC-1 - Regional Commercial District
- LI-1 - Light Industrial District
- HI-1 - Heavy Industrial District
- CSOD - Cluster Overlay District



Map Produced by:
Lorain County Auditor
J. Craig Snodgrass, CPA, CGFM
GIS Department
3/23/2026

